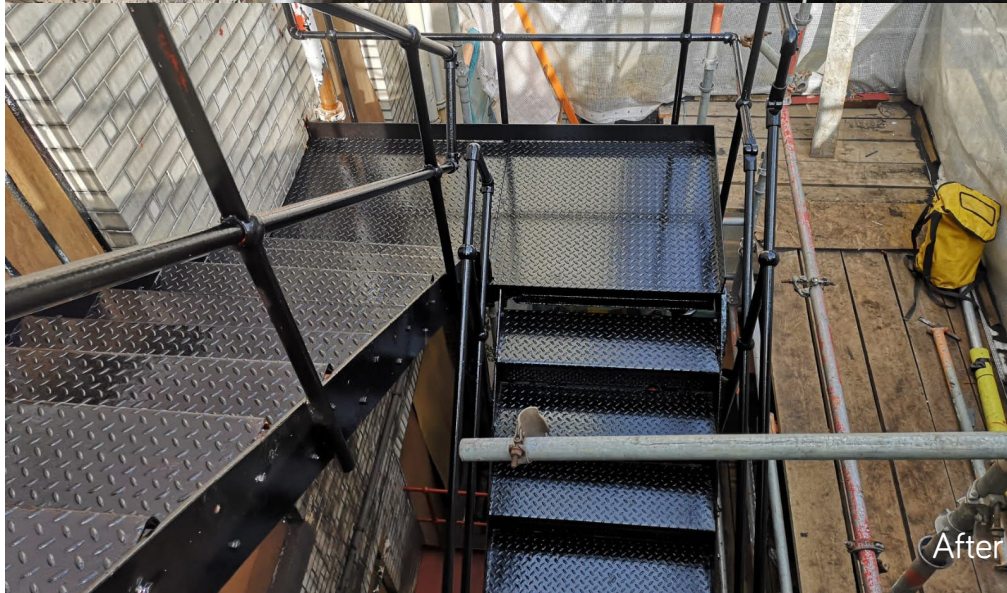
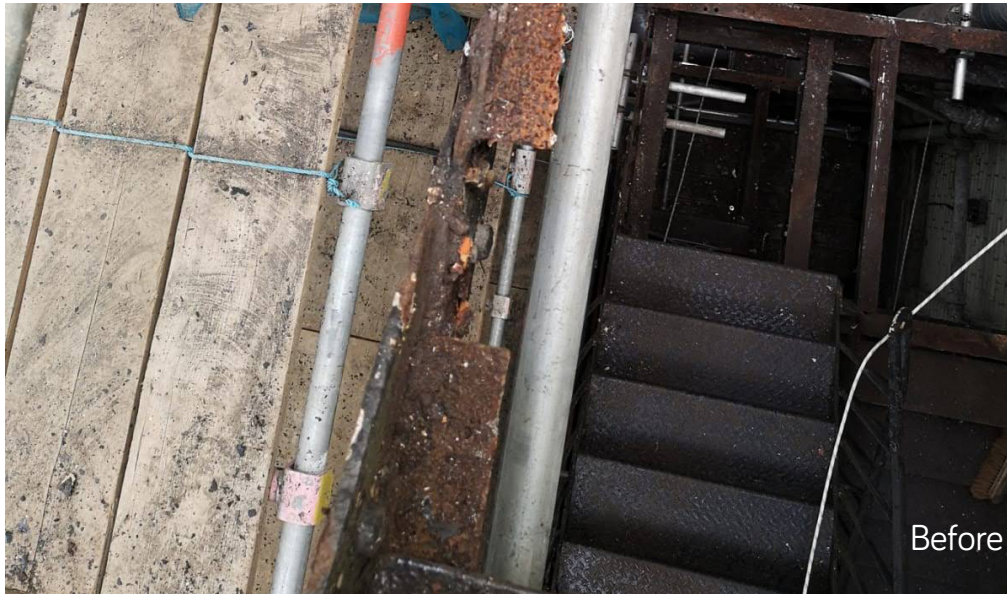


## PTSG steel fabrication project makes building fire-safe





# PTSG steel fabrication project makes building fire-safe



Premier Technical Services Group Ltd (PTSG) has completed a specialist rope access project at an office building in Strathclyde, replacing a large steel fire escape.

This project began with a general inspection of the eight-flight fire escape at a multi-story office building in Glasgow, by the Strathclyde Fire & Rescue Service. This was followed with the issue of a non-conformance ruling to the unsafe structure. As a result, the office block had to be evacuated from the top levels of the building.

PTSG Building Access Specialists Ltd was called out to survey the structure and confirmed that handrails did not meet standards. In addition, severe corrosion meant that specific components were corroded to a degree of near failure.

The estimate of costs to remove and replace the fire escape stairs were extremely high, which is why the team from PTSG carried out a repair feasibility study and presented this to the client.

Delivering savings of 80%, PTSG was appointed to carry out the restoration project, which consisted of systematically cutting out all defective steel work and replacing this with like-for-like steel members. On completing these structural works, the entire structure was shotblasted and painted.

The client was delighted with the finished product, which was delivered on time and within budget.

The client was delighted with the finished product, which was delivered on time and within budget. Independent structural engineers have given the staircase a life expectancy of 15 years minimum.

PTSG now inspects and washes down the fire escape on a six-monthly basis to avoid the root cause of defects redeveloping – bird waste.



# PTSG steel fabrication project makes building fire-safe

## PTSG Building Access Specialists Ltd – an increasing scope of services

PTSG Building Access Specialists Ltd, one of five specialist divisions of PTSG, more commonly delivers high-level services to the façade of buildings. Its core services include:



**High-level cleaning**  
(windows, facades, roofs)



**Rope access solutions**



**Building fabric maintenance**



**Roof and gutter maintenance and repairs.**



**Steeplejack services**

However, its versatile team can also deliver bespoke services. Another recent project saw PTSG deliver refurbishment works to the interior of the branch of Marks & Spencer located in Southend-on-Sea. Following roofing works carried out by PTSG, its operatives were asked to carry out some internal decorations to return the interior to a first-class condition after water damage.

Roof drone surveys are another way in which PTSG helps its clients to plan ahead for maintenance work. Thanks to the great level of detail provided by the drone footage, clients can see the exact condition of their buildings and any work PTSG's operatives can deliver that will ensure they remain in first-class condition.

